

# Slings and lifting accessories

Slings and other lifting accessories are a key part of the extensive range of Guldmann equipment for lifting, moving, positioning, training, and mobilising people.

Specially designed slings make it easy, practical and quick for the carer to support the user while being lifted and moved from one point to another, as well as ensuring that the carer can undertake such operations with a minimum of effort and strain.

All Guldmann slings are designed for comfort, dignity and ease of use with both mobile and ceiling hoist systems, and are ideal for moving people to and from beds and wheelchairs, as well as in sitting and lying positions, as required.

Special Guldmann sling designs are available for lifting and moving users with:

- different abilities to participate actively
- different degrees of body control and muscular strength
- different degrees of mobility
- single and double amputations
- special needs

and for both adults and children of many different sizes and weights.

They can also be used as integral parts of training and activity programmes for users. All Guldmann slings are available in a reusable (washable) version and/or in a disposable version to help ensure the best possible hygiene.

## Accessories

In addition to slings, Guldmann provides a wide range of specially designed lifting accessories for helping both the user and carer ensure greater mobility with less effort. And they allow the carer to provide the best possible assistance, while working in ergonomically correct positions.

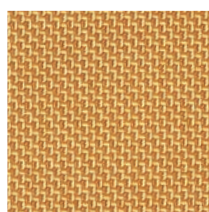
## Materials



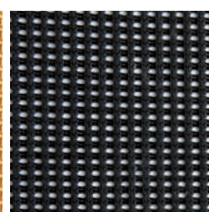
*Polypropylene  
(Disposable)*



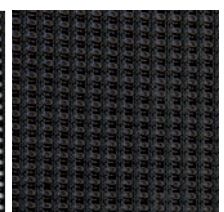
*Polyester/Cotton  
(Bariatric)*



*Polyester*



*Net  
Polyester*



*Spacer  
(Comfort)*

# ABC Slings

|        | Slings                                 |           | Kids   | Kids   | Kids                   | XS     | S      | M      | L      | XL     | XXL    | 3XL                  |
|--------|--|-----------|--------|--------|------------------------|--------|--------|--------|--------|--------|--------|----------------------|
|        |  |           | 4 - 6  | 6 - 10 | 10 - 14                |        |        |        |        |        |        |                      |
| ACTIVE | Active Micro                           | polyester |        |        |                        | 284031 | 284041 | 284051 | 284061 | 284071 | 284081 |                      |
|        | Active Micro Plus                      | polyester | 281001 | 281011 | 281021                 | 281531 | 281541 | 281551 | 281561 | 281571 | 281581 |                      |
|        | Active Trainer                         | polyester |        | 283011 | 283021                 | 283031 | 283041 | 283051 | 283061 | 283071 | 283081 |                      |
| BASIC  | Basic Basic                            | polyester | 270001 | 270011 | 270021                 | 270031 | 270041 | 270051 | 270061 | 270071 | 270081 | 270091 <sup>x)</sup> |
|        | Basic Basic                            | net       | 270102 | 270112 | 270122                 | 270133 | 270143 | 270153 | 270163 | 270173 | 270183 |                      |
|        | Basic Low                              | polyester |        |        |                        | 271031 | 271041 | 271051 | 271061 | 271071 | 271081 |                      |
|        | Basic Low                              | net       |        |        |                        | 271133 | 271143 | 271153 | 271163 | 271173 | 271183 |                      |
|        | Basic High                             | polyester | 272001 | 272011 | 272021                 | 272031 | 272041 | 272051 | 272061 | 272071 | 272081 | 272091 <sup>y)</sup> |
|        | Basic High                             | net       | 272102 | 272112 | 272122                 | 272133 | 272143 | 272153 | 272163 | 272173 | 272183 |                      |
|        | Basic Shell                            | net       |        |        |                        | 275032 | 275042 | 275052 | 275062 | 275072 |        |                      |
|        | Basic Hammock                          | polyester |        |        |                        | 274031 | 274041 | 274051 | 274061 | 274071 |        |                      |
| CUSTOM | Sit-On                                 | net       | 295001 | 295011 |                        | 295031 | 295041 | 295051 | 295061 | 295071 |        |                      |
|        | Sit-On High                            | net       | 296001 | 296011 |                        | 296031 | 296041 | 296051 | 296061 | 296071 |        |                      |
|        | Sit-On Comfort                         | spacer    | 293001 | 293011 |                        | 293031 | 293041 | 293051 | 293061 | 293071 |        |                      |
|        | Sit-On Comfort High                    | spacer    | 294001 | 294011 |                        | 294031 | 294041 | 294051 | 294061 | 294071 |        |                      |
|        | Custom Amputee                         | polyester |        |        |                        | 290031 | 290041 | 290051 | 290061 | 290071 |        |                      |
|        | Active Vest Kids <sup>xx)</sup>        | polyester |        | 283111 | 283121 <sup>xxx)</sup> |        |        |        |        |        |        |                      |
|        | Vest for Standing Shell <sup>xx)</sup> | polyester |        | 283511 | 283521 <sup>xxx)</sup> | 283531 |        |        |        |        |        |                      |

**Max lifting capacity for all Guldmann ABC slings: 255 kg**

x) Basic Basic and Basic High XXXL can lift up to 500 kg

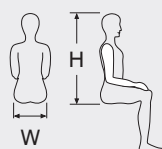
xx) Max lifting capacity for Active Vest Kids / Vest for standing Shell: 100 kg

xxx) Active Vest Kids / Vest for standing Shell: Kids 10-16

## Guidelines on choosing the size of a sling

|   | Kids    | Kids    | Kids    | XS      | S       | M       | L       | XL       | XXL      | 3XL      |
|---|---------|---------|---------|---------|---------|---------|---------|----------|----------|----------|
|   | 4 - 6   | 6 - 10  | 10 - 14 |         |         |         |         |          |          |          |
| H | 45 - 60 | 55 - 70 | 68 - 80 | 75 - 82 | 80 - 87 | 85 - 92 | 90 - 97 | 95 - 102 | 95 - 102 | 95 - 102 |
| W | 25 - 30 | 28 - 35 | 33 - 38 | 33 - 37 | 36 - 40 | 39 - 43 | 42 - 45 | 45 - 49  | 48 - 52  | 54 - 58  |

All dimensions in cm



3 4 7



Normal washing at the indicated temperature



Do not use bleaching agent

3 4 7

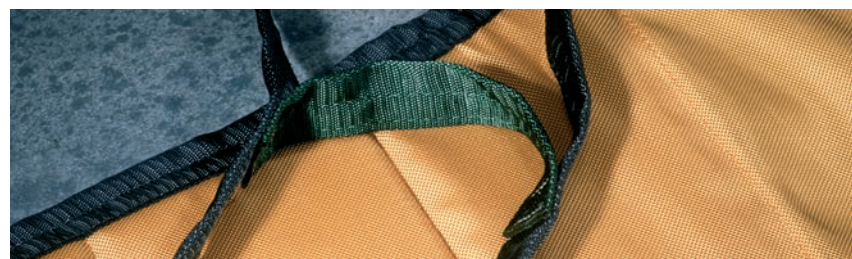


Tumble-drying at low temperature



Do not iron

5 8



The coloured loops ensure symmetry in the lift and at the same time ease the communication in connection with the lift

# ABC Slings



5

- ① **Coloured loops**  
The coloured loops ensure symmetry in the lift

- ② **Material**  
Dirt repellent polyester characterized by its strength and elasticity

- ③ **Auxiliary straps**  
It is possible to use auxiliary straps

- ④ **Padding on legs**  
All slings with divided leg supports have inset foam pads on legs. Easier to put on – smoother on skin

- ⑤ **Centre of sling marking**

- ⑥ **Information-label**  
Indicates all that the carer needs to know

- ⑦ **Label with size indication**  
Makes it easy and simple to find the correct size of sling

- ⑧ **Padding in back section**  
For added comfort on models with small back surface

- ⑨ **Positioning pocket**  
All Basic slings are provided with a pocket to ease correct positioning of sling

**Fit**  
Improved fit and more sizes to choose from for added comfort and safety

**Strength**  
Max. capacity increased to 255/500 kg

**Washing**  
Easy handling, the sling can be washed at 80°C and tumble-dried at max. 50°C